

Ministry of the Interior – General Directorate

Fire Rescue Service of the Czech Republic

Statistical Yearbook 2018

Czech Republic



Prague 2019

Table of content

Fire units' activities	3	Emergency calls	16
Number of particular types of incidents with fire units' intervention	3	Number of emergency calls to single European number 112	16
Evacuated and rescued persons.....	3	Fires	17
Interventions in natural disasters.....	3	Basic indicators	17
Summary information about incidents in regions	4	Fires – summary.....	17
Number of incidents in the regions (per 1 000 inhabitants) .	4	Number of fires with loss 1 million CZK and higher	17
Number of interventions (including multiple interventions) in particular types of incidents by type of fire unit	4	Fatalities and injuries in fires	17
Basic information on fire units	4	Fires and losses by place of origin.....	18
Summary - fire units' interventions in districts and regions .	6	Direct losses and salvaged values in fires in mill. CZK.....	18
Proportion of types of fire units in the total number of interventions.....	7	Fires – summary in branches	18
Number of firefighter's fatalities and injuries in interventions	7	Fires causes and activities by the origin.....	19
Number of particular fire units' activities	8	Prevention	20
Incidents with intervention of military fire units.....	9	Survey of fire prevention of FRS CR	20
Selected fires with loss of 10 million CZK and higher, selected emergencies in the 3 rd stage and special stage of alert	10	Fires – the way of conclusion.....	20
Fire units cooperation in interventions	14	International cooperation	21
Negative influences by interventions	14	International development cooperation	22
Selected exercises of the Integrated Rescue System bodies in 2017	15	Economic indicators	22
International exercises of the IRS bodies	15	Types of incidents with interventions of fire units ..	23

Notes:

Dash (-)	event didn't occur or wasn't monitored	F	fatalities
Cross (x)	entry was omitted for logical reasons	I	injuries
Index %	compares the data of 2018 to the state in 2017 (unless stated otherwise)	FRS CR	Fire Rescue Service of the Czech Republic
PSAP	Public Safety Answering Point	VFU	Voluntary Fire Units
MoD	Ministry of Defence of the Czech Republic	IRS	Integrated Rescue System

Unless otherwise noted, data in tables and graphs for 2018

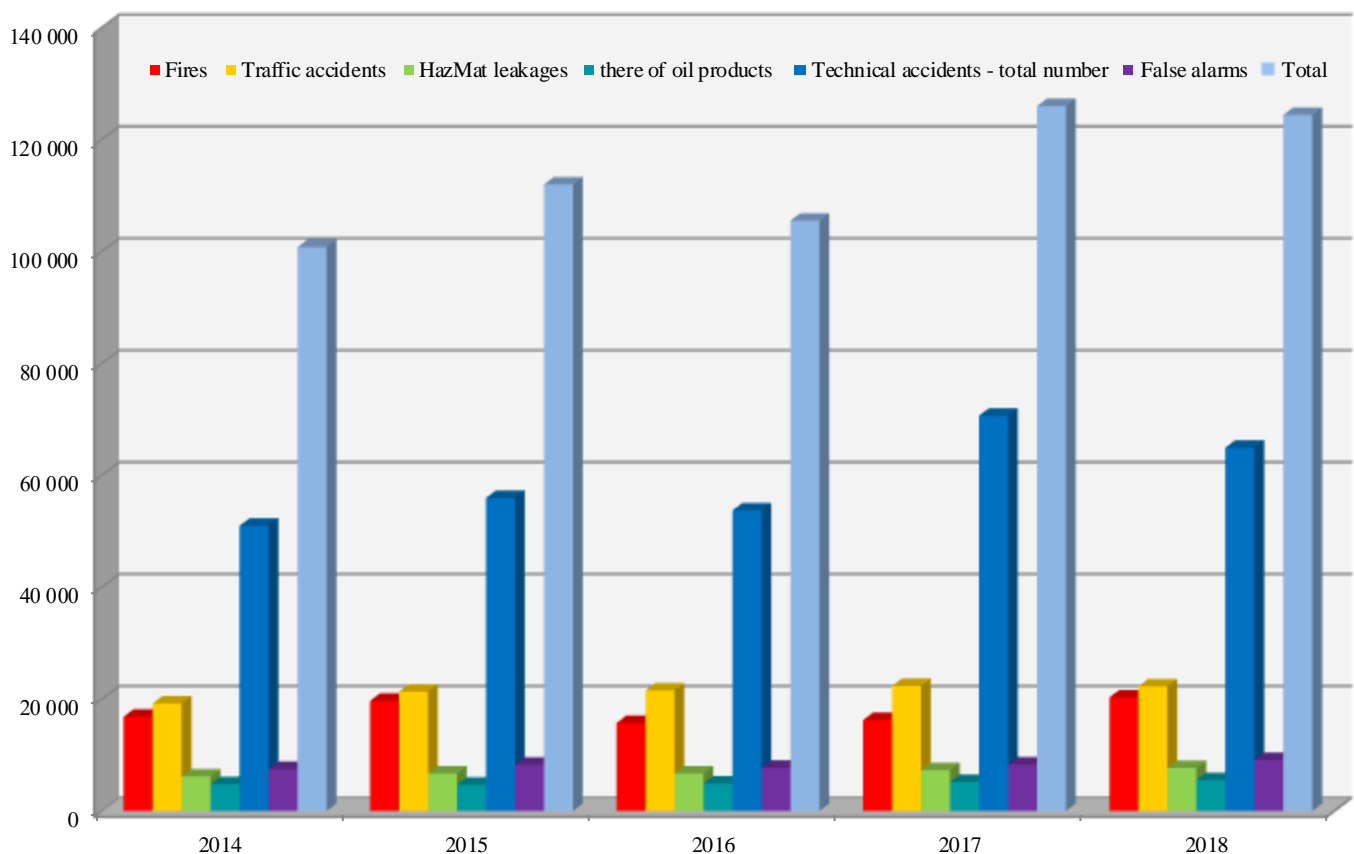
Fire units' activities

Number of particular types of incidents with fire units' intervention

Type of incident	Number of incidents					Share in % in total number	Index %
	2014	2015	2016	2017	2018		
Fires	16 851	19 685	15 730	16 249	20 277	16,3	125
Traffic accidents	19 219	21 330	21 521	22 329	22 265	17,9	100
HazMat leakages	6 161	6 693	6 698	7 304	7 687	6,2	105
there of oil products	4 793	4 675	4 923	5 190	5 487	4,4	106
Technical accidents - total number	50 965	55 928	53 714	70 647	64 936	52,2	92
there of technical accidents	9	7	6	7	7	0,0	100
technical assistances	44 967	49 525	47 845	63 550	57 401	46,1	90
technological assistances	617	747	427	515	466	0,4	90
other assistances	5 372	5 649	5 436	6 575	7 062	5,7	107
Radiation accidents	1	0	0	1	1	0,0	100
Other emergencies	52	75	92	1 134	91	0,1	8
False alarms	7 527	8 273	7 735	8 310	9 131	7,3	110
Total	100 776	111 984	105 490	125 974	124 388	100,0	99

Note: The total number includes 33 incidents (there of 17 fires), that took place abroad with intervention of fire units from the CR or the intervention took place on both sides of the border. The total number includes also provided humanitarian assistances of the CR abroad.

Incidents



29,290 persons were rescued and 55,700 persons were evacuated by fire units during the interventions in 2018.

Interventions in natural disasters

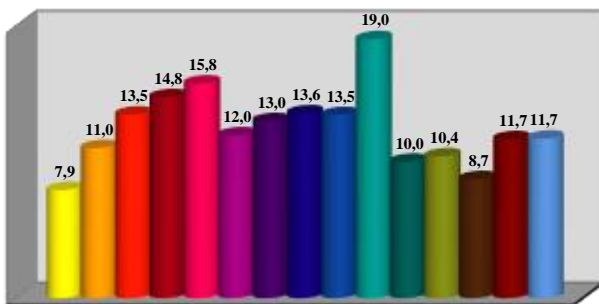
Type of intervention	2014	2015	2016	2017	2018
Fires	137	208	110	173	255
Traffic accidents	406	613	361	896	568
HazMat leakages	9	4	6	10	10
Technical accidents and others	15 297	12 885	11 707	30 881	14 895
Total	15 849	13 710	12 184	31 960	15 728

Summary information about incidents in the regions

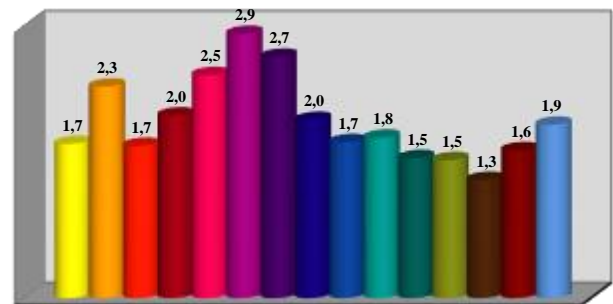
Type of incident	Capital of Prague	Central Bohemia	South Bohemia	Plzeň	Karlovy Vary	Ústí nad Labem
Fires	2 201	3 154	1 074	1 169	727	2 392
Traffic accidents	1 033	3 647	1 520	1 681	642	1 282
HazMat leakages	983	1 004	335	572	411	830
there of oil products	781	738	305	422	325	660
Technical accidents - total number	4 710	6 159	5 186	4 610	2 584	4 479
there of technical accidents	0	0	0	0	0	2
technical assistances	4 527	5 515	4 507	3 969	2 153	3 892
technological assistances	0	15	2	24	167	70
other assistances	183	629	677	617	264	515
Radiation accidents	0	1	0	0	0	0
Other emergencies	45	0	2	1	0	1
False alarms	1 309	944	519	543	299	836
Total	10 281	14 909	8 636	8 576	4 663	9 820
Index %	102	101	94	109	97	106

Number of incidents in the regions (per 1 000 inhabitants)

Total



Fires



Number of interventions (including multiple interventions) in particular types of incidents by type of fire unit

Type of incident	FRS CR			Municipal VFU		
	2017	2018	Index %	2017	2018	Index %
Fires	19 268	23 759	123	16 076	22 671	141
Traffic accidents	25 141	25 102	100	5 322	5 840	110
HazMat leakages	7 008	7 377	105	1 519	1 708	112
there of oil products	4 427	4 721	107	1 181	1 287	109
Technical accidents - total number	53 369	51 573	97	29 104	21 839	75
there of technical accidents	13	21	162	12	6	50
technical assistances	47 676	45 534	96	27 264	19 907	73
technological assistances	277	235	85	67	73	109
other assistances	5 403	5 783	107	1 761	1 853	105
Radiation accidents	6	2	33	0	0	x
Other emergencies	1 435	176	12	180	1	1
False alarms	7 193	8 217	114	2 430	3 234	133
Total	113 420	116 206	102	54 631	55 293	101

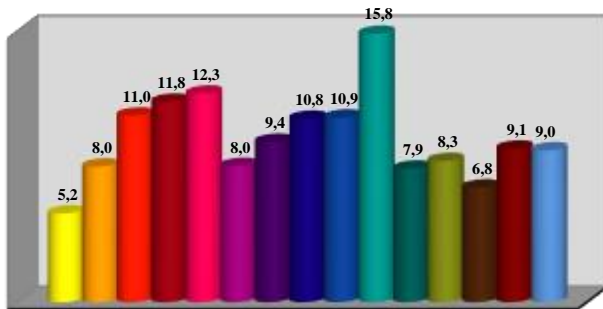
Basic information on fire units

Basic information	Fires					
	2014	2015	2016	2017	2018	Index %
Number of intervention	33 514	43 943	33 707	36 603	48 160	132
Number of incidents with multiple interventions	x	x	x	x	x	x
Total number of multiple interventions	x	x	x	x	x	x
Number of incidents in the 3rd and special stage of alert	17	49	24	38	66	174
Number of intervening firefighters	183 330	236 877	182 442	197 188	256 058	130
Average number of firefighters per intervention	5,47	5,39	5,41	5,39	5,32	99
Average distance to incident in kilometres	7,46	8,33	7,64	8,13	8,67	107
Average intervention time in minutes	124	133	112	117	134	115
Number of incidents with use of protective equipment	3 603	4 030	3 750	3 851	4 505	117
Number of incidents with use of heat protective clothing	1	1	3	0	3	x
with chemical clothing	2	0	6	10	6	60
with air breathing apparatus	6 264	6 164	6 545	6 099	7 509	123
with oxygen breathing apparatus	6	7	3	13	3	23

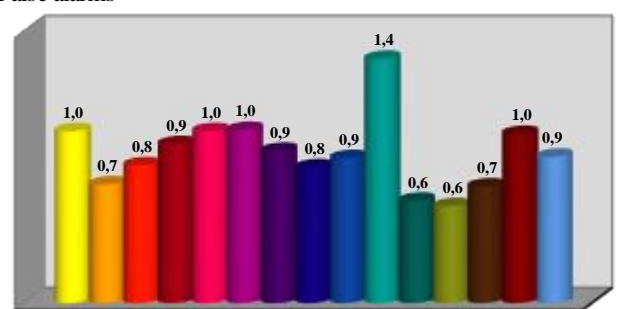
Liberec	Hradec Králové	Pardubice	Vysočina	South Moravian	Olomouc	Zlín	Moravian-Silesian	CR
1 174	1 082	891	900	1 826	963	759	1 965	20 277
1 178	1 670	1 563	1 408	2 503	1 306	929	1 903	22 265
464	460	341	345	645	322	254	721	7 687
353	350	214	242	331	193	169	404	5 487
2 528	3 826	3 735	6 301	6 160	3 641	2 724	8 293	64 936
0	1	0	0	3	0	1	0	7
2 380	3 462	3 027	5 739	5 453	3 390	2 286	7 101	57 401
0	3	6	131	5	8	4	31	466
148	360	702	431	699	243	433	1 161	7 062
0	0	0	0	0	0	0	0	1
0	4	0	0	4	2	32	0	91
395	440	442	731	712	361	400	1 200	9 131
5 739	7 482	6 972	9 685	11 850	6 595	5 098	14 082	124 388
105	106	96	97	98	91	92	91	99

Note: The total number does not include humanitarian assistance provided from the CR abroad.

Technical interventions



False alarms



Enterprises FRS			Enterprises VFU			Other unit			Total		
2017	2018	Index %	2017	2018	Index %	2017	2018	Index %	2017	2018	Index %
1 140	1 593	140	96	110	115	23	27	117	36 603	48 160	132
1 336	1 420	106	6	6	100	3	6	200	31 808	32 374	102
672	629	94	39	55	141	1	2	200	9 239	9 771	106
539	511	95	33	52	158	0	1	x	6 180	6 572	106
3 745	3 677	98	307	352	115	16	29	181	86 541	77 470	90
1	0	0	0	0	x	0	0	x	26	27	104
3 041	2 961	97	214	224	105	14	23	164	78 209	68 649	88
117	103	88	87	122	140	0	0	x	548	533	97
586	613	105	6	6	100	2	6	300	7 758	8 261	106
0	0	x	0	0	x	0	0	x	6	2	33
25	6	24	0	0	x	10	0	0	1 650	183	11
1 880	1 769	94	534	569	107	5	4	80	12 042	13 793	115
8 798	9 094	103	982	1 092	111	58	68	117	177 889	181 753	102

Technical intervention						False alarms					
2014	2015	2016	2017	2018	Index %	2014	2015	2016	2017	2018	Index %
96 839	104 334	103 522	129 244	119 800	93	10 718	12 207	11 634	12 042	13 793	115
535	349	375	1 370	736	54	39	36	41	40	43	108
2 624	1 430	1 819	5 815	2 354	40	460	615	485	600	561	94
6	1	0	0	1	x	0	0	0	0	0	x
413 986	454 361	447 335	565 214	529 241	94	52 769	58 126	57 117	60 745	68 889	113
4,39	4,42	4,40	4,37	4,42	101	5,14	5,01	5,12	5,04	4,99	99
7,53	7,56	7,49	7,35	7,50	102	4,95	5,10	4,96	4,96	5,33	107
62	85	70	71	65	91	14	14	28	28	31	111
489	522	458	603	601	100	41	43	27	31	56	181
3	2	1	1	0	0	1	0	0	0	0	x
60	53	44	54	48	89	0	0	0	0	0	x
543	545	502	637	653	103	39	43	27	32	59	184
2	4	2	3	3	100	0	0	0	0	0	x

Summary - fire units' interventions in districts and regions

District (region)	Interventions in total		FRS CR interventions			Municipal VFU interventions			Enterprises FRS interventions			Other units interventions	
	Number	Ind.%	Number	Ind.%	% in total	Number	Ind.%	% in total	Number	Ind.%	% in total	Number	% in total
Capital of Prague	13 916	103	10 516	101	75,6	1 004	108	7,2	1 489	111	10,7	6	0,0
Benešov	2 164	95	1 229	95	56,8	898	94	41,5	34	85	1,6	0	0,0
Beroun	1 954	115	1 177	106	60,2	726	131	37,2	48	150	2,5	0	0,0
Kladno	2 347	106	1 570	104	66,9	721	110	30,7	47	168	2,0	0	0,0
Kolín	1 694	109	1 100	108	64,9	490	119	28,9	101	86	6,0	0	0,0
Kutná Hora	1 357	114	891	111	65,7	394	115	29,0	68	151	5,0	0	0,0
Mělník	2 085	112	1 212	111	58,1	618	111	29,6	248	123	11,9	0	0,0
Mladá Boleslav	2 282	110	1 558	109	68,3	586	133	25,7	135	69	5,9	0	0,0
Nymburk	1 698	113	1 039	109	61,2	561	113	33,0	96	171	5,7	0	0,0
Praha - východ	3 708	108	2 114	107	57,0	1 407	106	37,9	162	125	4,4	0	0,0
Praha - západ	2 835	92	1 669	96	58,9	1 071	87	37,8	77	113	2,7	0	0,0
Příbram	2 225	116	1 262	106	56,7	930	130	41,8	23	177	1,0	2	0,1
Rakovník	1 312	108	658	102	50,2	629	112	47,9	22	314	1,7	1	0,1
Central Bohemia	25 661	107	15 479	105	60,3	9 031	110	35,2	1 061	114	4,1	3	0,0
České Budějovice	2 600	93	2 006	96	77,2	497	82	19,1	96	110	3,7	1	0,0
Český Krumlov	1 409	87	929	92	65,9	370	74	26,3	96	84	6,8	14	1,0
Jindřichův Hradec	1 582	89	902	95	57,0	651	80	41,2	29	161	1,8	0	0,0
Písek	1 227	131	756	111	61,6	435	178	35,5	30	200	2,4	6	0,5
Prachatice	1 048	74	542	80	51,7	472	67	45,0	27	71	2,6	7	0,7
Strakonice	1 214	111	810	103	66,7	361	141	29,7	37	93	3,0	6	0,5
Tábor	1 531	99	968	102	63,2	529	97	34,6	34	89	2,2	0	0,0
South Bohemia	10 611	95	6 913	97	65,1	3 315	90	31,2	349	100	3,3	34	0,3
Domažlice	1 463	123	778	117	53,2	646	126	44,2	28	187	1,9	3	0,2
Klatovy	2 237	113	1 471	114	65,8	732	113	32,7	23	92	1,0	10	0,4
Plzeň - jih	1 301	114	787	111	60,5	489	121	37,6	20	80	1,5	0	0,0
Plzeň - město	2 595	113	2 241	109	86,4	276	184	10,6	68	101	2,6	0	0,0
Plzeň - sever	1 512	119	896	109	59,3	598	142	39,6	11	48	0,7	1	0,1
Rokycany	1 082	109	684	106	63,2	379	112	35,0	16	200	1,5	0	0,0
Tachov	1 552	104	905	100	58,3	620	109	39,9	25	147	1,6	0	0,0
Plzeň	11 742	113	7 762	109	66,1	3 740	123	31,9	191	106	1,6	14	0,1
Cheb	2 131	99	1 233	92	57,9	711	108	33,4	176	129	8,3	8	0,4
Karlovy Vary	2 628	94	1 131	102	43,0	1 382	88	52,6	103	87	3,9	7	0,3
Sokolov	2 200	103	1 242	108	56,5	859	97	39,0	98	109	4,5	1	0,0
Karlovy Vary	6 959	98	3 606	100	51,8	2 952	95	42,4	377	109	5,4	16	0,2
Děčín	2 810	116	1 441	115	51,3	1 299	118	46,2	70	91	2,5	0	0,0
Chomutov	1 989	105	947	115	47,6	819	102	41,2	223	82	11,2	0	0,0
Litoměřice	1 647	128	1 085	117	65,9	452	152	27,4	108	174	6,6	2	0,1
Louny	1 468	107	916	107	62,4	511	106	34,8	40	105	2,7	0	0,0
Most	1 720	109	971	107	56,5	286	105	16,6	461	117	26,8	0	0,0
Teplíce	1 796	117	1 101	117	61,3	563	128	31,3	121	85	6,7	10	0,6
Ústí nad Labem	1 690	115	1 124	114	66,5	302	94	17,9	263	162	15,6	0	0,0
Ústí nad Labem	13 120	113	7 585	113	57,8	4 232	114	32,3	1 286	112	9,8	12	0,1
Česká Lípa	3 212	115	1 511	122	47,0	1 606	109	50,0	93	131	2,9	1	0,0
Jablonec nad Nisou	1 571	106	964	107	61,4	545	102	34,7	61	120	3,9	1	0,1
Liberec	3 687	117	1 965	117	53,3	1 452	117	39,4	266	123	7,2	1	0,0
Semily	1 751	101	951	101	54,3	767	101	43,8	33	103	1,9	0	0,0
Liberec	10 221	112	5 391	113	52,7	4 370	109	42,8	453	122	4,4	3	0,0
Hradec Králové	2 829	103	1 934	103	68,4	818	107	28,9	60	78	2,1	16	0,6
Jičín	1 582	116	991	112	62,6	520	126	32,9	67	116	4,2	0	0,0
Náchod	2 552	123	1 465	112	57,4	1 039	145	40,7	23	121	0,9	25	1,0
Rychnov nad Kněžnou	2 155	111	1 090	122	50,6	833	107	38,7	224	86	10,4	0	0,0
Trutnov	2 401	106	1 312	105	54,6	1 061	108	44,2	25	71	1,0	1	0,0
Hradec Králové	11 519	111	6 792	109	59,0	4 271	117	37,1	399	89	3,5	42	0,4
Chrudim	2 369	115	1 419	112	59,9	930	120	39,3	17	170	0,7	3	0,1
Pardubice	2 606	108	1 733	106	66,5	670	113	25,7	198	109	7,6	0	0,0
Svitavy	1 963	87	1 400	89	71,3	515	78	26,2	47	174	2,4	0	0,0
Ústí nad Orlicí	2 662	87	1 684	90	63,3	727	79	27,3	245	98	9,2	4	0,2
Pardubice	9 600	98	6 236	99	65,0	2 842	96	29,6	507	108	5,3	7	0,1
Havlíčkův Brod	2 646	114	1 817	118	68,7	725	104	27,4	97	123	3,7	3	0,1
Jihlava	2 608	105	1 689	106	64,8	460	87	17,6	240	135	9,2	216	8,3
Pelhřimov	1 946	85	1 195	94	61,4	709	71	36,4	15	83	0,8	17	0,9
Třebíč	1 966	93	1 383	99	70,3	390	82	19,8	181	80	9,2	0	0,0
Žďár nad Sázavou	2 676	98	1 622	99	60,6	819	88	30,6	20	154	0,7	214	8,0
Vysočina	11 842	99	7 706	104	65,1	3 103	86	26,2	553	107	4,7	450	3,8

District (region)	Interventions in total		FRS CR interventions			Municipal VFU interventions			Enterprises FRS interventions			Other units interventions	
	Number	Ind.%	Number	Ind.%	% in total	Number	Ind.%	% in total	Number	Ind.%	% in total	Number	% in total
Blansko	2 057	104	1 156	105	56,2	874	105	42,5	23	96	1,1	0	0,0
Brno - město	4 964	98	4 469	101	90,0	392	74	7,9	83	109	1,7	0	0,0
Brno - venkov	4 266	103	2 979	104	69,8	1 169	98	27,4	87	107	2,0	0	0,0
Břeclav	1 840	93	1 177	97	64,0	633	89	34,4	26	68	1,4	0	0,0
Hodonín	1 913	95	1 119	95	58,5	764	96	39,9	26	108	1,4	0	0,0
Vyškov	1 605	104	1 148	108	71,5	418	96	26,0	22	85	1,4	0	0,0
Znojmo	2 003	102	1 225	100	61,2	758	107	37,8	17	170	0,8	0	0,0
South Moravia	18 648	100	13 273	102	71,2	5 008	96	26,9	284	102	1,5	0	0,0
Jeseník	876	95	474	89	54,1	381	104	43,5	6	50	0,7	15	1,7
Olomouc	3 496	104	2 282	101	65,3	1 121	110	32,1	89	100	2,5	4	0,1
Prostějov	1 656	86	992	87	59,9	639	85	38,6	23	59	1,4	0	0,0
Přerov	1 985	95	1 319	93	66,4	567	103	28,6	98	84	4,9	0	0,0
Šumperk	2 112	95	1 184	95	56,1	893	96	42,3	34	87	1,6	0	0,0
Olomouc	10 125	96	6 251	95	61,7	3 601	99	35,6	250	85	2,5	19	0,2
Kroměříž	1 293	101	896	97	69,3	358	110	27,7	38	141	2,9	0	0,0
Uherské Hradiště	1 656	103	899	99	54,3	496	111	30,0	14	93	0,8	247	14,9
Vsetín	2 200	99	1 000	96	45,5	859	110	39,0	69	62	3,1	271	12,3
Zlín	2 302	83	1 596	85	69,3	560	79	24,3	129	79	5,6	16	0,7
Zlín	7 451	95	4 391	92	58,9	2 273	100	30,5	250	79	3,4	534	7,2
Bruntál	2 172	101	1 210	108	55,7	917	92	42,2	31	124	1,4	14	0,6
Frydek - Místek	3 936	88	2 085	92	53,0	1 374	81	34,9	477	91	12,1	0	0,0
Karviná	3 266	92	2 448	94	75,0	705	85	21,6	112	85	3,4	0	0,0
Nový Jičín	2 533	87	1 257	93	49,6	1 113	83	43,9	163	76	6,4	0	0,0
Opava	2 517	92	1 458	96	57,9	895	87	35,6	164	99	6,5	0	0,0
Ostrava	5 846	98	4 622	101	79,1	522	80	8,9	698	93	11,9	1	0,0
Moravian-Silesian	20 270	93	13 080	98	64,5	5 526	84	27,3	1 645	91	8,1	15	0,1

Proportion of types of fire units in the total number of interventions

FRS CR	63.9 % of all interventions Total number of 243 fire units registered (as of December 31, 2018).
Municipality VFU	30.4 % of all interventions Total number of 6 846 fire units (as of December 31, 2018), from which 236 fire units category II, 1 355 fire units category III, 5 255 fire units category V. From the total number as many as 819 (11.9%) fire units operated in only one intervention and 2 910 (42.5 %) fire units didn't operated at all. The main types of interventions were fires, technical assistances and traffic accidents.
Enterprises FRS	5.0 % of all interventions Total of 96 fire units (as of December 31, 2018), from those 16 military fire units. The main types of interventions were technical and technological assistances and false alarms.
Enterprises VFU	0.6 % of all interventions Total of 140 fire units (as of December 31, 2018). The main types of interventions were fires and false alarms.

Number of firefighter's fatalities and injuries in interventions

Category	2014		2015		2016		2017		2018		Index %	
	F	I	F	I	F	I	F	I	F	I	F	I
Professional firefighters	0	307	0	324	0	283	1	236	1	251	100	106
Voluntary firefighters	0	121	0	137	0	123	1	209	0	173	0	83
Total	0	428	0	461	0	406	2	445	1	424	50	95

On 24th August 2018 professional firefighter died during the ride to the intervention - traffic accident of two cars near town Mohelnice.

Number of particular fire units' activities

Activity type	FRS CR		Municipal VFU		Enterprises FRS		Enterprises VFU and others	Total	
	Number	Index %	Number	Index %	Number	Index %		Number	Index %
fire assistance	272	77	755	155	50	88	23	1 100	121
assistance on searching or elimination of explosives	97	93	11	85	6	30	0	114	83
reconnaissance	107 467	103	44 019	104	7 993	104	667	160 146	103
use of fire extinguisher	415	106	271	119	71	83	25	782	108
use of simple fire extinguisher	1 943	121	1 500	134	182	134	7	3 632	127
D water stream	457	181	659	230	65	232	68	1 249	210
C water stream	5 146	133	6 412	149	427	129	148	12 133	141
B water stream	190	119	409	168	24	126	7	630	148
water foam monitor stream water	561	164	755	140	86	172	20	1 422	151
high - pressure water	7 621	123	3 113	141	331	114	18	11 083	127
use of high-pressure water fog	124	x	14	x	5	x	0	143	x
light expansion foam	4	200	4	400	1	100	0	9	150
medium expansion foam	155	100	51	204	13	118	1	220	115
low expansion foam	128	122	39	130	20	154	3	190	127
soaking agent	555	140	352	161	19	158	4	930	148
powder from mobile equipment	7	700	2	x	3	x	0	12	1 200
inert gasses from mobile equipment	21	111	0	x	6	120	0	27	113
special technical equipment and extuinguishing agents	271	109	85	97	10	143	2	368	107
water pumping	904	103	1 296	92	175	104	25	2 400	97
long-distance water supply with hoses	67	163	219	187	2	100	3	291	182
shuttle water supply	614	162	2 175	196	61	142	6	2 856	186
water refill	1 746	142	4 035	163	190	171	17	5 988	157
cooling	951	119	448	126	101	133	41	1 541	120
natural ventilation	3 968	102	1 049	114	233	101	87	5 337	105
forced ventilation	1 488	110	553	118	87	113	5	2 133	112
insulation, separation of substances	83	101	18	113	5	33	0	106	94
neutralisation	50	122	6	300	7	25	1	64	90
dilution	57	98	31	135	16	100	2	106	109
substances pump - over	305	105	33	92	23	92	7	368	103
bordering and obstructing after leaked substance	1 190	97	239	119	74	79	28	1 531	99
collecting of leaked substance (excl. oil substances)	388	111	55	122	45	73	9	497	106
identification of leaked substance	656	99	69	97	52	75	1	778	96
sampling	282	82	16	160	3	60	0	301	84
gas concentration measurement	3 430	107	122	144	157	137	1	3 710	109
securing of place of accident	13 528	97	3 302	104	666	98	4	17 500	98
securing of place of air equipment landing	822	115	322	167	5	63	0	1 149	125
removing of after-effect traffic accident	9 287	94	2 100	103	563	104	4	11 954	96
traffic control	7 919	94	4 869	95	210	96	0	12 998	94
removing of obstacles from roads and other areas	16 312	84	9 389	64	1 545	94	26	27 272	76
cleaning-up of oil products (vehicle's filling)	11 741	106	2 510	107	442	92	44	14 737	106
fire protection measures	13 082	102	3 033	118	216	105	26	16 357	105
surroundings securing	1 190	93	883	117	48	102	1	2 122	101
lighting the place of intervention	2 720	103	1 977	117	235	114	4	4 936	109
water surface intervention	323	62	126	86	13	144	14	476	70
intervention on and under water surface	208	87	85	91	3	150	3	299	89
operating the dangerous equipment	96	91	36	71	5	125	0	137	85
provisional repair	1 505	89	426	55	130	98	11	2 072	80
construction dismantling	2 881	108	2 485	110	117	102	28	5 511	109
water ray cutting	38	x	1	x	2	x	0	41	x
water, gas, electricity etc. closing	2 759	98	516	113	53	96	9	3 337	100
breaking into closed space	13 473	102	1 346	113	70	80	8	14 897	102
snow and ice removing	79	11	37	18	27	68	3	146	15
intervention at height using climbing equipment	561	137	94	37	33	63	2	690	93
intervention at height and depth	4 485	89	912	79	95	73	10	5 502	87
persons searching	440	103	496	95	42	127	9	987	100
searching persons in rubbles	53	252	22	129	0	x	0	75	197
searching and rescue of persons from water	133	106	56	106	2	x	1	192	108
extrication of persons from depth	151	102	41	95	5	83	0	197	100
extrication of persons at heights	93	74	14	127	8	x	2	117	85
extrication of persons from crashed vehicles	1 315	102	322	101	31	148	0	1 668	102
extrication of persons from lifts	1 260	113	66	118	122	100	12	1 460	112
extrication of persons from collapsed buildings	17	189	6	150	1	x	0	24	185
transport of patients	8 373	111	2 138	125	506	113	91	11 108	114
rescue of persons - another	3 908	113	447	122	49	91	7	4 411	114
pre-medical treatment	5 323	105	1 765	122	458	98	103	7 649	108

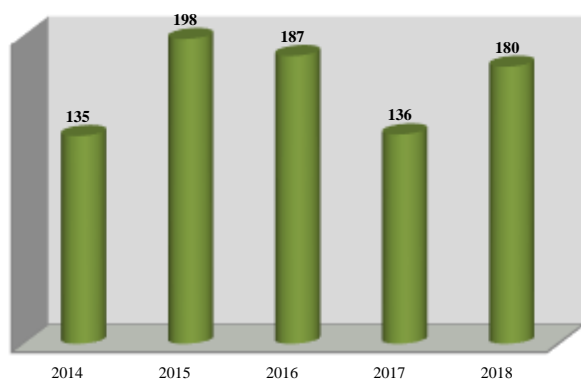
Activity type	FRS CR		Municipal VFU		Enterprises FRS		Enterprises VFU and others	Total	
	Number	Index %	Number	Index %	Number	Index %		Number	Index %
use of defibrillator (AED)	225	x	205	x	0	x	0	430	x
cooperation in medical treatment of patient	4 602	100	1 094	112	79	113	4	5 779	102
extrication of material	545	73	210	77	24	48	2	781	73
capture of animals including searching	1 008	67	303	80	49	129	0	1 360	70
capture and elimination of insects	3 468	179	2 438	212	121	168	10	6 037	191
evacuation of inhabitants from objects	432	103	145	89	170	102	2	749	100
evacuation of inhabitants - areal	39	108	16	73	21	117	1	77	101
evacuation of material	257	107	282	113	3	43	2	544	109
evacuation of animals, rescue of animals	655	93	255	121	16	267	0	926	101
establishment and providing operation in evacuation center	5	167	0	0	0	x	0	5	83
marking of dangerous areas	500	77	209	50	14	44	0	723	65
decontamination of persons, incl. firefighters	80	17	7	39	5	100	0	92	18
decontamination of equipment	72	18	3	18	6	60	0	81	19
floods - preparedness measures	15	45	66	62	1	x	0	82	59
floods - elimination of after-effect	66	206	238	127	4	x	0	308	140
getting cover into work	0	x	2	x	0	x	0	2	x
transport of drinking water, food and articles for survival	52	130	74	176	5	500	0	131	158
dispensing and distribution of drinking water and food	107	114	66	122	5	250	0	178	119
providing of technical equipment for IRS bodies	345	86	72	111	15	375	3	435	93
logistics	225	104	179	115	4	100	0	408	109
water streams monitoring	151	73	112	49	6	100	0	269	61
waiting for special services	1 733	92	357	87	193	102	1	2 284	92
taking pictures, videos	22 492	110	3 046	111	2 475	125	5	28 018	111
use of thermal imaging camera	6 366	133	748	208	286	152	12	7 412	139
standby on the place of intervention	2 459	110	5 932	126	241	127	16	8 648	121
standby on own fire station	30	158	1 104	110	4	80	1	1 139	111
standby on the fire station	338	109	1 173	112	3	100	2	1 516	111
others	5 413	93	1 813	101	643	93	12	7 881	95
fire unit didn't intervene (call off on the way to accident)	3 946	115	2 157	133	184	106	8	6 295	121
Total	321 314	103	130 943	108	20 822	106	1 729	474 808	104

Incidents with intervention of military fire units

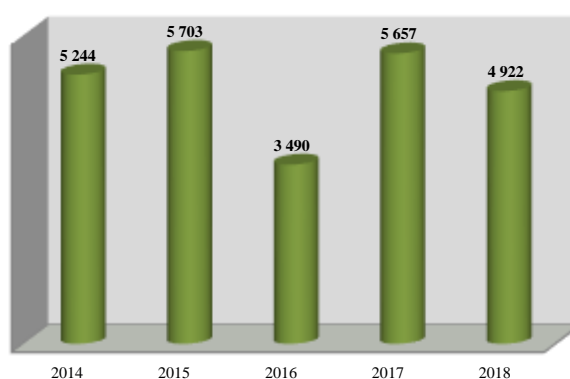
	2014	2015	2016	2017	2018	Index %
Fires under MoD area	135	198	187	136	180	132
losses (thousands CZK)	9 132,0	2 794,0	1 410,0	300,0	2 973,8	991
salvaged values (thousands CZK)	13 237,0	125 429,0	39 960,0	10 092,0	46 574,6	461
Fires outside the MoD area	6	19	29	14	34	243
Technical assistances under MoD area	5 244	5 703	3 490	5 657	4 922	87
Technical assistances outside the area of MoD	23	18	10	28	51	182

Under the Act No. 133/1985 Coll. on fire protection, as amended, fire supervision under the MoD area of responsibility is provided by fire protection bodies of the MoD in accordance with § 85a. Military Fire Supervision body provides fire supervision of military objects, units and in institutions established by legal entities or by MoD in extent of § 31 (The act No. 133/1985 Coll. on Fire Protection, as amended). Military Fire Supervision body has 7 employees. Military fire units operate as enterprises FRS units according to § 65 a No. 133/1985 Coll. on Fire Protection, as amended. The number of military fire units station in the Czech Army is in total 16 with 24 hours/day duty. Military fire units can be used for assistance in emergencies to support Integrated Rescue System. The number of firefighters in military fire units is in total 566.

Fires under MoD area



Technical assistances under MoD area



Selected fires with loss of 10 million CZK and higher, selected emergencies in the 3rd stage and special stage of alert

Region	Date	Description (type of the event, place and detailed information)
Capital of Prague	20. 1.	fire of hotel, Praha-Nové Město, taking down the constructions, searching persons, several forced entries, evacuation and rescuing persons, intervention of chemical service, intervention at height and depths, 3 injured firefighters, non-functional FPS (fire protection system), use of material help of Czech Red Cross
	21. 1.	fire of paint shop of car repair, technical drying room and burning room Praha-Kyje, taking down the construction, cylinders present, evacuation of objects, intervention of chemical unit, intervention at heights and depths, shuttle water transport
	29. 1.	fire of car repair shop, family house and shelter, Praha-Čimice, cylinders present, taking down the construction, extinguish by CCS Cobra, intervention of chemical unit, use of soaking agent, intervention at heights and depths, shuttle water transport
	8. 5.	fire of storage hall of textiles and mattresses, car repair shop, Praha-Hostivař, danger of explosion or destruction, fumed area and toxic gaseous substances present, taking down the construction, extinguish by CCS Cobra, means and forces of FRS Central Bohemia Region, intervention of chemical unit and chemical laboratory Kamenice, extinguish by airplane, extinguished by special technical means, use of soaking agent and heavy and light expansion foam, intervention at heights and depths, shuttle water transport, 2 firefighters injured
	9. 11.	fire of sports hall, Praha-Vysočany, danger of explosion and destruction, cylinders present, taking down the construction, extinguishing of hidden fire sources, means and forces of FRS Central Bohemia Region present, intervention of chemical unit and chemical laboratory Kamenice, intervention at heights and depths, shuttle water transport
	4. 12.	fire of storage hall of textiles, furniture and shoes, Praha-Písnice, fumed area and toxic gaseous substances present, radiant heat and melting flammable material, taking down the construction, use of CCS Cobra, means nad forces of Emergency unit of FRS CR and FRS Central Bohemia Region, intervention of chemical unit and chemical laboratory Kamenice, intervention at heights nad depths, shuttle water transport, 1 firefighter injured
	13. 12.	fire of storage hall, Praha-Horní Počernice, danger of explosion and destruction, fumed area and toxic gaseous substances present, taking down the construction, use of CCS Cobra, means and transport of FRS Central Bohemia region, intervention of chemical unit and intervention at heights and depths, shuttle water transport
Central Bohemia	23. 2.	fire of isolation in freezing plant under partial reconstruction, Mochov, Praha-East, danger of explosion and destruction, temperature 10 °C below zero, fumed area and toxic gaseous substances present, taking down the construction, use of CCS Cobra, intervention of Emergency Unit of FRS CR loader for taking down of perimeter wall, means and forces of FRS of Capital of Prague, intervention of chemical laboratory Kamenice, aerial extinguishing, use of heavy and light expansion foam, intervention at heights and depths, shuttle water transport, 1 injured firefighter, 2 days long intervention
	30. 4.	fire of steel storage hall with technology of plastic waste crusher, Úholičky, Praha-West, fumed area and toxic gaseous substances present, taking down the construction, intervention of FRS CR loader of FRS CR for material transport out of the hall for extinguishing, means and forces of FRS Capital of Prague, intervention of chemical laboratory Kamenice, use of soaking agent and heavy foam, shuttle water transport, 1 zraněný hasič, nefunkční PBZ
	22. 7.	forest fire, Mšeno-Olešno, Mělník, fumed area and toxic gaseous substances present, inaccessible terrain, intervention was complicated due to drought, means and forces of FRS of South Moravian Region, aerial extinguishing, shuttle water transport
	7. 8.	forest fire, Bělá pod Bezdězem, Mladá Boleslav, area of 75 hectares, inaccessible terrain, intervention complicated due to draught, multiple fire source along 14km of railroad, use of simple extinguishing means, means adn forces of FRS of Capital of Prague and FRS of Liberec Region, aerial extinguishing, use of soaking agent, shuttle water transport
	12. 8.	fire of separated waste compressing hall and surrounded buildings, Kutná Hora-Karlovy, radiant heat and melting of flammable material, without possibility of turning down the transformer station, taking down the construction, intervention of Emergency Unit of FRS CR for uncover of hidden fire sources, means and forces of FRS of Capital of Prague, intervention of chemical laboratory Kamenice, aerial extinguishing, use of soaking agent and heavy and light expansion foam, shuttle water transport, 10 injured firefighters
	17. 8.	fire of production´s hall for laminated baths, Příbram, taking down the construction, intervention of Emergency Unit of FRS CR for reducing fire loading of access road and stabilisation of front wall and demolition work, means and forces of FRS of Capital of Prague, intervention of chemical laboratory Kamenice, aerial extinguishing, use of soaking agent, light and heavy expansion foam, intervention at heights and depths, shuttle water transport
	21. 8.	forest fire, Chodouň, Beroun, area of 10 hectares, use of simple extinguishing means, means and forces of FRS of Capital of Prague, aerial extinguishing, use of soaking agent, shuttle water transport
	27. 8.	fire of agriculture building and storehouse of straw, Čestín-Čenovice, Kutná Hora, explosion of cylinders, taking down the construction, intervention of Emergency Unit of FRS CR for transport and spreading of straw for extinguishing, means and forces of FRS Vysočina Region, use of soaking agent and heavy expansion foam, intervention at heights and depths, shuttle water transport
	15. 10.	fire of producing hall and storehouse, Lysá nad Labem, Nymburk, taking down the construction, intervention of chemical laboratory Kamenice, use of soaking agent and dry foam, intervention at heights and depths, shuttle water transport, 2 days long intervention
	29. 10.	fire of shelter with wood, Doubek, Praha-East, fire spreaded toward fence and car, intervention was complicated due to strong wind, protecting of neighbouring family house, cow house and poultry farm, cylinders present, taking down the construction, intervention of Emergency Unit of FRS CR for seaking of hidden fire sources, use of soaking agent, shuttle water transport, 3 firefighters injured
10. 11.	fire of storage hall of electrical waste, Lety, Praha-West, fumed area and toxic gaseous substances present, danger of explosion or destruction, multiple fire sources, taking down the construction, intervention of Emergency Unit of FRS CR for demolition of perimeter wall, means and force of FRS of Capital of Prague, intervention of chemical laboratory Kamnice, use of soaking agent and light and heavy expansion foam, intervention at heights and depth, shuttle water transport, finding out of shortage in fire documentation, use of material help from Czech Red Cross	
South Bohemia	30. 11.	fire of joiner´s workshop, Kadov, Strakonice, temperature below freezing point, taking down the construction, cylinders present, hidden fire sources, means and forces of FRS of Plzeň region, use of hevly expansion foam, shuttle water transport, controlled burning down
Plzeň	21. 8.	forest fire, Přovany, Plzeň-North, area of 10 hectares, inaccessible terrain, intervencion was complicated due drought, multiple fire source, use of simple extinguishing means, means and forces of FRS of Capital of Prague, aerial extinguishing, use of soaking agent, shuttle water transport
	11. 9.	fire of lodging house, car repair shop and glazier's shop, Plzeň-Jižní Předměstí, taking down the construction, cylinders and flammable substances present, lacking pressure in hydrant net, hidden fire sources, use of soaking agent, intervention at heights and depths, shuttle water transport, 3 firefighters injured, non-functional FSD
	17. 9.	fire of powder painting shop, Štěnovický Borek, Plzeň-town, huge amount of flammable substances, taking down the construction, use of heavy expansion foam, intervention at heights and depths, shuttle water transport

Cause	Number of fatalities	Number of injuries	Number of rescued or evacuated person	Loss (in million CZK)	Salvaged values (in million CZK)	Number of fire units	Stage of alert
under investigation	4	10	84	20,0	50,0	19	special
unclear				2,5	5,0	21	3.
negligence				1,0		16	3.
under investigation		2		45,0	15,0	47	special
deliberate ignition				20,0	15,0	26	special
under investigation		1		10,0	1,0	50	special
negligence				20,0	5,0	49	special
negligence		1		100,0	5,0	65	special
technical failure of crushing line		1		47,0	20,0	43	special
unproven fault				0,1	0,3	28	special
technical failure				0,7	6,4	47	special
unclear		10		10,7	5,0	30	special
technical failure of resin mixing machine				50,0	100,0	26	special
deliberate ignition				1,5	8,0	22	special
negligence		1		3,0	8,0	27	special
negligence				100,0	100,0	26	special
negligence		3		0,6	15,0	18	special
negligence				6,9	15,0	35	special
false construction of chimney				10,0	5,0	13	special
deliberate ignition				0,5	2,0	33	special
negligence	1	13	31	40,0	10,0	14	special
technical failure of tunnel oven				40,0	30,0	6	special

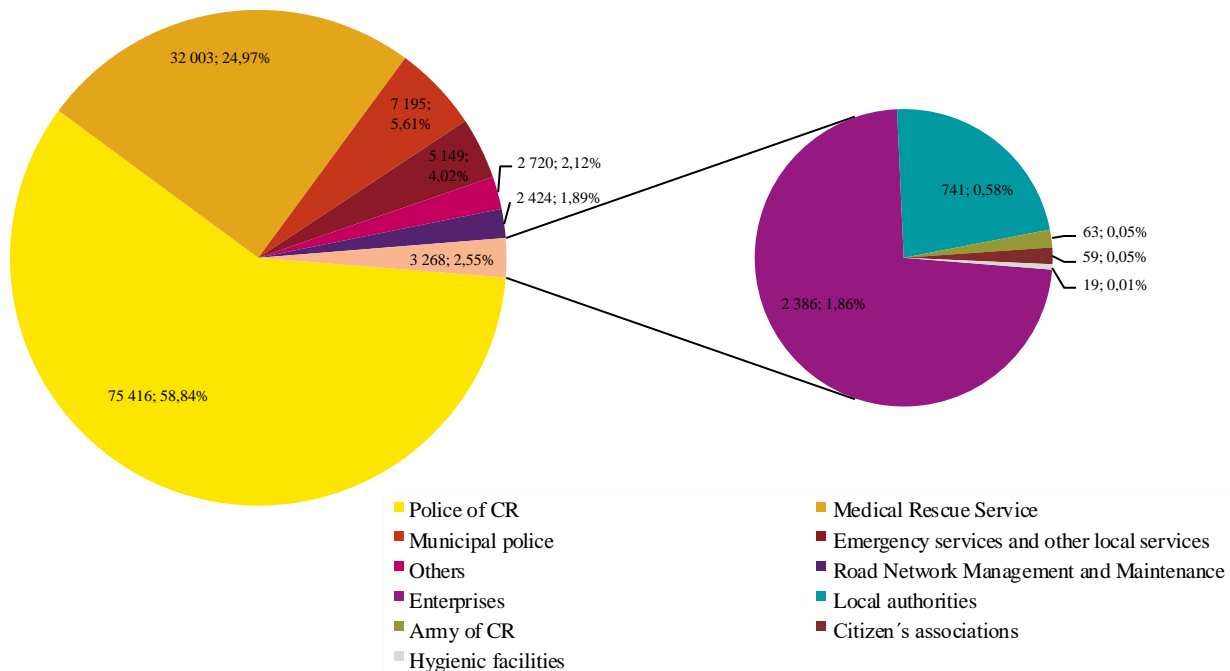
Selected fires with loss of 10 million CZK and higher, selected emergencies in the 3rd stage and special stage of alert

Region	Date	Description (type of the event, place and detailed information)
Plzeň	23. 12.	fire of storage hall for vehicles and straw, Tachov-Oldřichov, fumed area and gaseous toxic substances present, taking down the construction, intervention of Emergency Unit of FRS CR for extinguishing of transported straw, use of soaking agent, shuttle water transport, 1 firefighter injured
Karlovy Vary	17. 4.	fire of producing hall, Ostrov, Karlovy Vary, danger of explosion and destruction, taking down the construction, explosion of cylinders, use of soaking agent, intervention at heights and depths, shuttle water transport
Ústí nad Labem	28. 6.	fire of school roof, Podbořany, Louny, fumed area and toxic gaseous substances present, taking down the construction, use of soaking agent, light and heavy expansion foam, intervention at heights and depths, shuttle water transport
	4. 7.	forest fire, Prackovice nad Labem-Litochovice nad Labem, Litoměřice, fire spread toward to field, garden and building, use of simple extinguishing means, aerial extinguishing, reburning, use of soaking agent and heavy expansion foam, shuttle water transport, 2 firefighters injured
	19. 9.	fire of storage hall with line for pressing waste, Litvínov-Růžodol, Most, taking down the construction, intervention of Emergency Unit of FRS CR and means and forces of FRS of Plzeň region, intervention of chemical laboratory Třemošná, use of soaking agent and light expansion foam, shuttle water transport, 1 firefighter injured
	11. 10.	forest fire, Jílové-Sněžník, Děčín, area of 25 hectares, inaccessible terrain in rocks, wrong mobile signal, lack of water, intervention forces and means of FRS of Capital of Prague, aerial extinguishing, 40 firefighters from Germany, use of soaking agent, shuttle water transport
Liberec	14. 5.	fire of wooden chips machine in heating plant, Jindřichovice pod Smrkem, Liberec, taking down the construction, intervention of Emergency Unit of FRS CR for clearing rooms after burnt lorries and wooden chips transport for water pouring, protection of energy unit, intervention at heights and depths, shuttle water transport, 1 firefighter injured, use of personal and material help
	13. 8.	forest fire, Liberec-Ještěd, inaccessible terrain, intervention was complicated due to wind and undisciplined tourists at fire place, forces and means of FRS of Capital of Prague, aerial extinguishing, use of soaking agent, shuttle water transport, 1 firefighter injured
	23. 8.	fire of induction oven, Přepře, Semily, 5 tons of melted cast iron with temperature of 1 900 °C, use of manual extinguishing means, evacuation of subject from radiant heat, gradual temperature lowering by pouring the cast iron out of oven, means and forces of FRS of Central Bohemia region
	14. 10.	forest fire, Raspenava, Liberec, area of 3 hectares, inaccessible terrain in the rocks, multiple fire source, intervention was complicated by the wind, means and forces of FRS of Capital of Prague, aerial extinguishing, shuttle water transport, 2 firefighters injured
	30. 11.	fire of farm, Chrastava, Liberec, fumed area and toxic gaseous substances present, radiant heat and melting of flammable material, intervention was complicated due to wind and temperature below freezing point, protection of neighbouring stables, taking down the construction, use of CCS Cobra, hidden fire sources, use of soaking agent, intervention at heights and depths, shuttle water transport
Hradec Králové	16. 8.	forest fire, Machov-Bělý, Náchod, area of 1 hectare, inaccessible terrain, use of simple extinguishing means, aerial extinguishing, shuttle water transport, 1 firefighter injured
	19. 8.	fire of former castle, Horní Maršov, Trutnov, taking down the construction, intervention at heights and depths, shuttle water transport, 4 firefighters injured
Pardubice	7. 8.	fire of hay shed, Opatovec, Svitavy, taking down the construction, use of soaking agent, intervention at heights and depth, shuttle water transport, controlled burning down
Vysočina	7. 1.	fire of wooden recycled material on the surface and surrounded objects, Nová Cerekev, Pelhřimov, fumed area and toxic gaseous substances, use of soaking agent, intervention was complicated due to strong wind, intervention of Emergency Unit of FRS CR for establish of fire section to prevent fire spreading, intervention of chemical laboratory Tišnov, intervention at heights and depths, shuttle water transport, 1 firefighter injured, 11 day long intervention
	12. 7.	fire of joiner's workshop, Humpolec, Pelhřimov, taking down the construction, multiple fire source, intervention at heights and depths, shuttle water transport
	3. 12.	fire of storage and sorting hall of electric waste, Jihlava-Hruškové Dvory, fumed area and toxic gaseous substances present, employees helped with transport of waste out of the site, use of soaking agent, shuttle water transport
South Moravian	22. 1.	fire of air-conditioning units in seal storage hall, Tišnov, Brno-country, intervention of chemical laboratory Tišnov, mobile operational container placed on site, use of soaking agent and heavy expansion foam, shuttle water transport, 2 firefighters injured
	18. 4.	fire of former hostel, Šanov, Znojmo, danger of explosion or destruction, taking down the construction, inaccessible hidden fire sources, cooling of surrounding buildings and trees, shuttle water transport, 1 firefighter injured
	21. 6.	fire of railway embankment and forest, Bzenec, Hodonín, inaccessible terrain, intervention was complicated due to strong wind and drought, use of simple extinguishing means, means and forces of FRS of Zlín region, aerial extinguishing, extinguishing of hidden fire sources, use of soaking agent, shuttle water transport
	29. 8.	fire of producing hall, Blansko, forced entry into land and object, fumed area and toxic gaseous substances present, interface layer on floor level, taking down the construction, use of CCS Cobra, use of soaking agent, shuttle water transport
	21. 9.	fire of community center, Drnovice, Vyškov, fumed area and gaseous toxic substances present, danger of explosion or destruction, taking down the construction, use of CCS Cobra, intervention of chemical laboratory Tišnov, use of soaking agent and heavy expansion foam, intervention at heights and depths, 1 firefighter injured
	22. 10.	fire of meadow and forest, Březina, Vyškov, military area, fire spread toward to forest danger of munition explosion, intervention was complicated due to drought, use of simple extinguishing means, forces and means of FRS of Olomouc region, mobile operational container placed on site, monitored burning, restricted area due to fallen pieces
	30. 10.	fire of hay shed and building material, Vlasatice, Brno-country, intervention was complicated due to strong wind, taking down the construction, transport of hay for extinguishing, use of heavy foam, intervention at heights and depths, shuttle water transport, controlled burning down, 2 firefighters injured, 2 days long intervention
Zlín	15. 6.	fire of machine in producing hall of rubber factory, Zubří, Vsetín, employees tried to extinguish the fire before fire units arrived, oil leakage from damaged distribution, use of heavy expansion foam
	10. 9.	fire of filling line and seven lorries in area of fuel storehouse, Loukov, Kroměříž, huge amount of flammable material, cooling of tanks and recuperation, means and transport of FRS South Moravian and Olomouc region, intervention of chemical laboratory Frenštát pod Radhoštěm, use of heavy expansion foam, shuttle water transport

Cause	Number of fatalities	Number of injuries	Number of rescued or evacuated person	Loss (in million CZK)	Salvaged values (in million CZK)	Number of fire units	Stage of alert
technical failure		1		12,0	14,0	22	special
technical failure of conveyor belt				25,0	100,0	11	special
negligence			10	0,5	4,0	11	special
technical failure of goods train		2		0,5		30	special
self ignitions		1		60,0	40,0	36	special
negligence				0,2	1,0	13	special
deliberate ignition		1	6	5,0	16,0	14	special
unproven fault		1		0,0	0,1	21	special
technical failure			20	2,5	15,0	14	special
negligence		2		0,1	0,1	23	special
negligence		2		50,0	100,0	17	special
unproven fault		1				13	special
deliberate ignition		4	4	5,0	6,0	12	special
self ignitions				15,5		18	special
self ignitions		1		0,5	34,0	43	special
self ignitions				14,8	3,0	7	special
technical failure		1		10,0	30,0	4	special
technical failure of wiring		2		13,8	50,0	15	special
unclear		2	1	0,4	5,9	15	special
technical failure of goods train				0,4	10,0	53	special
technical failure of wiring				30,0	10,0	9	2.
technical failure		1		25,0	10,0	22	3.
unexamined						16	3.
natural disaster		2		0,9	1,2	27	3.
self ignitions			166	49,2	100,0	7	1.
negligence		2	1	70,0	100,0	24	3.

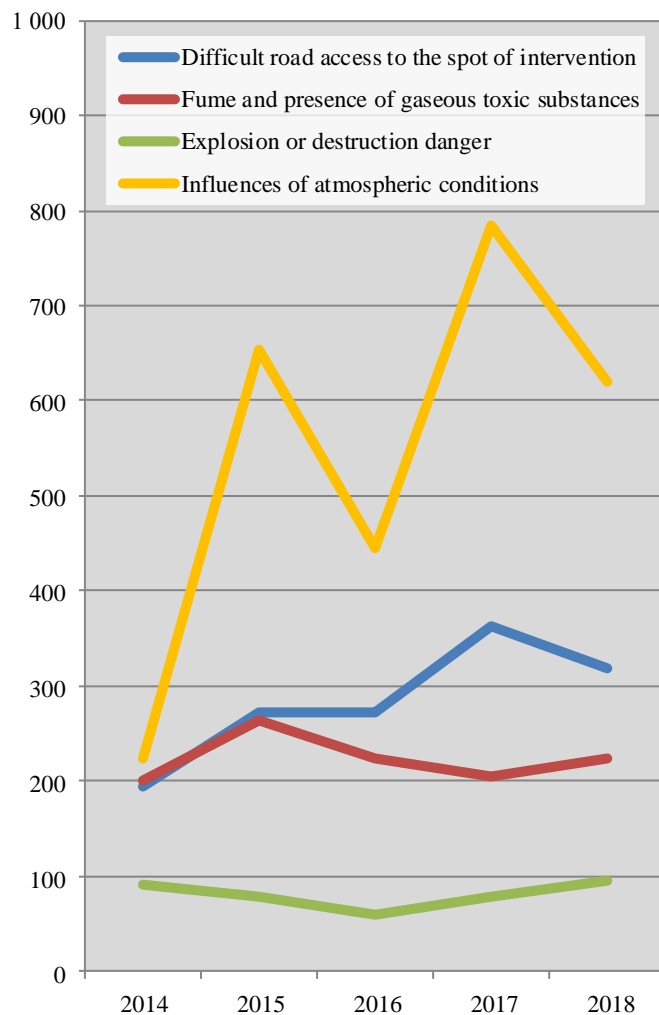
Fire units cooperation in interventions

Total number of cooperation - 128 175



Negative influences by the interventions

Type	Number	Index %
Late arrival of fire units		
malfunction of fire report office	8	89
failure of communication means	136	84
late reporting after noticing	12	200
late alarm declaring after reporting	7	33
late departure/response after alarm declaring	84	115
difficult road access to the spot of intervention	318	88
vehicle malfunction on the road	10	43
requested local fire unit did not depart to fire	78	100
late request of auxiliary fire units	2	67
others	40	75
Firefighting conditions		
lack of resources	4	80
lack of basic firefighting equipment	10	50
lack of special firefighting equipment	13	108
lack of water	24	200
lack of other firefighting means/agens	2	67
lack of protective equipment	6	600
firefighting equipment failure	61	90
incorrect deployment of firefighting forces and means	1	20
inaccurate cooperation with owner/user	28	80
others	4	133
Intervention impeding circumstances		
fume and presence of gaseous toxic substances	225	109
radiant heat, melting of flammable substances	44	110
electric current turned on	29	81
explosion or destruction danger	96	123
improper departure area	40	138
improper intervention or evacuation ways	65	167
temperature below -10 °C	101	151
other influences of atmospheric conditions	620	86
negative influence of technological disposition	6	67
others	44	147



Selected exercises of the Integrated Rescue System bodies in 2018

Tactical exercise of the IRS bodies with theme of facility building fire of State castle Jezeří spread towards to neighbouring forest and caused injuries of several persons – Ústí nad Labem region

Tactical exercise took place on 13 May and the theme of the exercise was fire that was caused by cutting with angular sander. The fire reached roof construction and due to weather conditions was spread towards to forest around surrounding access road. Several persons were injured by the fire. The aim of this exercise was to test operational readiness, coordination and cooperation of IRS bodies. Professional and voluntary fire units from Ústí nad Labem region, Police of the Czech Republic, Air Service of the Police of the Czech Republic, Medical Emergency Service of Ústí nad Labem region and Municipal police Litvínov took part in the exercise. The forest fire was extinguished by helicopter with bucket, which was filled by fire units in the pumping station. The exercise definitely proved the operational readiness of IRS bodies of Ústí nad Labem region for this type of emergency. The arrival times of all IRS bodies have been abided. Means and forces of all IRS bodies arrived on the spot of emergency in set times and with the requested number of fire units, also from more distant places in fire district of Most. Technical qualification of intervention leader for managing of complicated intervention in the 3rd stage of fire alert was proven. Also rising expert qualification of voluntary firefighters of municipalities was demonstrated. IRS bodies were informed about the possible fire risk and extinguishing possibilities in object of State castle Jezeří at the end of the exercise.

Tactical exercises of the IRS bodies “Povodeň 2018” – Olomouc region

The exercise of IRS bodies and crisis management authorities of Olomouc region was held on 16 – 18 May. Crisis staffs were exercising for first two days, practical exercise was conducted with focus on rescue operation during floods last day of the exercise. FRS of Olomouc region, Regional authority of Olomouc region, Police of the Czech Republic of Olomouc region, Catchment basin Moravy, s.e. (state enterprise), Czech hydrometeorological institute – Ostrava, Municipal authority Zábřeh, Mohelnice and Litovel took part in this exercise. Firefighters verified activities, which are provided in real emergency – floods. Rescue of persons from water surface was realised with help of helicopter

International exercises of the IRS bodies

The MoI-DG FRS CR focuses in the international environment on the practical cooperation of experts from the FRS CR and the rescue teams of the FRS CR, which are predetermined for the dealing with the emergencies and disasters. In this area, the international exercises in the framework of the EU Civil Protection Mechanism are the most used for the training of its members and further exercises co-funded by Regional Authority projects.

Under the auspices of the MoI-DG FRS CR, 10 members of the FRS CR participated in a total of 8 international EU exercises in the role of expert teams, observers or organizers of exercises in 2018. In addition to the above-mentioned experts, the MoI-DG FRS CR deployed 4 rescue teams to 4 international tactical exercises and 16 members of the teams were deployed to 6 command

and boat. The diving group of FRS Olomouc region in cooperation with divers – firefighters from Polish State Fire Service Lower Silesia extricated the wreck of the car that was stuck under the water. The possibility of activation of BTS station of mobile operator Vodafone Czech Republic was verified in view of the fact that in case of large flood the affected area would be without signal of mobile operator (signal failure). Within the exercise social networks as Facebook and Twitter were tested for communication with inhabitants and were used for getting information about the situation in the affected area. More than 300 persons, dozens of organisations and bodies of IRS took part in the exercise. Also members of Security Council of Olomouc region and members of security council of crisis staffs municipalities with extended area Zábřeh, Mohelnice and Litovel were involved in the exercise. Crisis staffs practised during emergency solving the activity of permanent working groups and cooperation with the permanent working of crisis staff of Olomouc region in coordination with FRS Olomouc region.

Exercise of the IRS bodies “Railway accident in tunnel Ejpvovice” – Plzeň region

Exercise of IRS bodies under the name “Railway accident in tunnel Ejpvovice” was realised on 6 November in newly built tunnel Ejpvovice in railway corridor Praha – Plzeň. The exercise verified the function of fire-safety elements in tunnel and tactical activity of fire units, Police of the Czech Republic and Emergency Medical Service of region Plzeň during the railway accident with large number of injuries. There were 130 persons travelling in the train – 3 person died, 10 persons were badly injured, 25 persons were moderate injured and 30 persons were slightly injured. Involved IRS bodies were preparing for this type of emergency – accident in tunnel. They prepared by means of intensive expert preparation for emergency with a large number of injuries. During the exercise, the coordination of basic IRS bodies was positively evaluated. Mechanism for injuries treatment, coordination at the sorting station and information about number of injuries was functional. Prepared and trained tactic for intervention proceeding was successful with a few partial shortcomings. The use of evacuation lorry and means for injuries transport along the tunnel were very effective.

post exercises.

The United Nations, the Secretariat for the Coordination of Humanitarian Affairs and its International Search and Rescue Advisory Group (INSARAG) is an important partner for the cooperation and enhancement of the preparedness of experts of the FRS CR. Within this cooperation, 7 members of the FRS CR participated in international exercises.

As part of the project “Operational improvement of USAR and WASAR Modules” 3 selected members of the FRS Moravian-Silesian region took part in the specialized training for rescue from wild water in Charlotte (USA). This project is funded by the European Social Fund and the beneficiary is the Regional Authority of the Moravian-Silesian region.

Selected international exercises of the IRS bodies

Exercise “ROTER EBER”, Bad Kötzing, Federal Republic of Germany

The exercise ROTER EBER (red boar) was held from 8 to 9 June. It was organized by the German party and more than 15 organizations with a total of 2 500 rescuers and 378 means took part in the exercise. This international meeting was focused on the preparedness of emergency services of both countries for accidents with a large number of affected people. The exercise took place at several locations at the same time and was focused on a large forest fire, a bus accident with extrication of persons, extinguishing in inaccessible terrain or shuttle water transport. The individual model situations took place in the vicinity of towns Bad Kötzing, Chamerau, and Blaibach. FRS Pilsen region participated in the exercise, both in practical deployment as well as in the organizational and management staff of the exercise. Fire unit from Domažlice extricated persons from the crashed bus and another 8 units of FRS Pilsen region were sent for long-distance and shuttle water supply as well as firefighting in inaccessible terrain. Fire tank SPOTT 55 of the Emergency Unit of the FRS CR prepared a demonstration of firefighting in inaccessible terrain.

The international exercise “PIEMODEX 2018”, Alessandria, Italy

The international exercise PIEMODEX was held in Italy from 13 to 15 March. The members of the Flood Rescue Using Boats Module (FRB also known as WASAR) of the FRS CR and the rescue teams from Italy, Spain, Belgium, and Luxembourg took part in this exercise. The exercise was focused on practice all relevant procedures associated with providing rescue assistance abroad (customs or immigration procedures that would occur if assistance is provided outside EU countries). The exercise took place in vicinity of the city of Alessandria in difficult conditions, even at night. The organizers prepared, among other things, simulated incidents with local people. During the exercise, the Czech team rescued over two hundred people and its work was evaluated very positively, particularly the professionalism and expertise of the members of the FRS CR.

Exercise “TURANY 2018”, Žilina, Slovak Republic

The four-days exercise of the USAR team of the FRS Moravian-Silesian region took place in several locations of the Žilina region in Slovakia from 19 to 22 November. The activity was held in the framework of the ongoing project “Operational improvement of USAR and WASAR Modules” funded by the European Social Fund and whose beneficiary is the Regional Authority of the Moravian-Silesian Region. The exercise was conceived as a complex process of providing rescue humanitarian assistance to the neighbouring country which was affected by a strong earthquake. The main objective of the exercise was to approach the real deployment in a natural disaster, resulting in extensive damage or complete collapse of buildings with a large number of injured and killed people. The complexity of the exercise is guaranteed by standard procedures that are required for real deployment in international rescue operations in accordance with the international INSARAG methodology. By completing this exercise, the USAR team of the FRS Moravian-Silesian region practiced and intensified a number of procedural acts and sub-activities and thus contributed to increase the overall level of preparedness for deployment abroad.

International exercise “EU CHEM-REACT 2018”, Javoriv, Ukraine

The exercise EU-CHEM-REACT 2018 took place in the area of the Javoriv Military Training Complex, nearby the Polish-Ukrainian border from 25 to 28 September. The exercise was the final part of the same named project on which the FRS CR actively participated. MoI-FRS CR deployed a unit which was consisted of CBRNET module (module for chemical, biological, radiological and nuclear detection and sampling) and Emergency Unit of the FRS CR. CBRNET Module fulfilled tasks related to exercise scenarios and the logistics part of the unit ensured the transport of the humanitarian base and built accommodation for nearly 80 participants by using emergency survival container. The Czech Republic was evaluated very positively and participation revealed a lot of knowledge in the area of logistics and team transportation solutions, especially in customs procedures.

Emergency calls

Emergency call is the most frequent way how to call for assistance or how to notify about information important for public safety. Emergency call works:

- continuously,
- for all citizens,
- throughout the territory,
- free of charge,
- in all telephone networks,
- and from any voice terminal equipment of telephone networks.

Citizens are used to this kind of call for help, and with the development of mobile telephony, emergency call has become constantly available. Emergency call is a service of the state, which provides protection of basic human rights – to protect life, health and property. Pursuant to information from an emergency call, the IRS bodies begin its activities; especially they deploy units to the spot of reported emergency situation. This information is transmitted electronically as „data messages“ to the operational centres of the IRS bodies.

FRS CR receives emergency calls to national emergency call number 150 and to single European emergency call number 112. FRS CR operates advanced nationwide telecommunications technology dislocated in 14 regional call centres to receive emergency calls.

Single European emergency call number 112 can be reached free of charge with fixed and mobile devices in all EU

Member States and also in several non-EU states - Montenegro, Norway, Liechtenstein, Island and Turkey. In the Czech Republic, 112 emergency number is operated alongside with national emergency call numbers.

Following hurricane Herwart in October 2017, an analysis of the permeability of the 112 emergency call centres was carried out and subsequently measures were implemented to increase the robustness of the technology infrastructure system, in 2018. The efficiency of steps was validated successfully by the implementation of the three strain tests.

In 2018, the total number of 2 678 732 calls were received by FRS CR, from which 2 309 008 calls to single European number 112 and 369 724 calls to national number 150.

Number of emergency calls to single European number 112



Fires

Basic indicators

Indicator	Value
Number of fires	20 720
Losses (CZK)	2 870 476 400
Salvaged values (CZK)	10 865 969 600
Fatalities in direct context	63
Total fatalities	100
Injuries	1 465

Firefighters rescued 1 334 persons in fire intervention and 7 090 persons were evacuated.

Number of fatalities includes persons who were found death on place of fire and who didn't die as a consequence of fire, it was in total 37 people.

The summary shows, that 57 fires per day with losses of 7.9 million CZK occurred in average in the Czech Republic in 2018. Early intervention has salvaged values of 29.8 million CZK per day.

Salvaged values were 3.8 times higher than direct losses (by early intervention of fire units).

Remark: Total number of fires includes 17 fires abroad (grass and forest cover, fields, family houses, row house, pension, and mattress).

In 2018, in comparison to 2017, number of fires increased by 23.6 %, losses decreased by 21.4%. Total of 450 major fires (with losses over 1 million CZK), i.e. 2.2 % of all fires caused 76,3 % of overall losses. Number of fatalities increased by 8.7 % and number of injuries increased by 5.3 %.

Fires - summary

Year	Number of fires	Losses in CZK	Salvaged values in CZK	Fatalities	Injuries
1996	21 539	1 345 497 700	8 418 267 000	118	1 037
1997	21 540	1 229 951 200	6 393 776 000	135	1 026
1998	24 041	1 902 566 000	6 925 493 000	96	1 123
1999	20 857	2 088 610 700	8 907 455 000	105	934
2000	20 919	1 426 340 200	6 584 192 000	100	975
1996-2000	108 896	7 992 965 800	37 229 183 000	554	5 095
2001	17 285	2 054 670 000	6 230 121 000	99	881
2002	19 132	3 731 915 000	6 251 751 000	109	942
2003	28 937	1 836 614 900	7 646 975 000	141	1 112
2004	21 191	1 669 305 100	6 977 363 000	126	918
2005	20 183	1 634 371 000	7 110 116 000	139	914
2001-2005	106 728	10 926 876 000	34 216 326 000	614	4 767
2006	20 262	1 933 991 700	9 182 541 000	144	919
2007	22 394	2 158 494 200	8 974 428 000	130	1 023
2008	20 946	3 277 297 400	14 545 693 000	142	1 109
2009	20 177	2 169 150 200	9 074 906 000	117	980
2010	17 937	1 956 159 200	11 115 762 000	131	1 060
2006-2010	101 716	11 495 092 700	52 893 330 000	664	5 091
2011	21 125	2 241 800 100	8 078 932 000	129	1 152
2012	20 492	2 861 527 700	10 637 936 000	125	1 286
2013	17 105	2 402 562 900	13 342 294 000	111	1 189
2014	17 388	2 198 327 400	11 533 643 000	114	1 179
2015	20 232	2 495 902 900	11 093 236 000	115	1 449
2011-2015	96 342	12 200 121 000	54 686 041 000	594	6 255
2016	16 253	3 378 246 000	11 654 305 900	124	1 291
2017	16 757	3 653 115 100	9 674 378 000	92	1 392
2018	20 720	2 870 476 400	10 865 969 600	100	1 466

Number of fires with loss 1 million CZK and higher

Year	Number			Loss in thousands CZK		
	Total in CR	Major fires	Share in %	Total in CR	Major fires	Share in %
2014	17 388	285	1,6	2 198 327,40	1 590 068,00	72,3
2015	20 232	376	1,9	2 495 902,90	1 840 333,00	73,7
2016	16 253	332	2,0	3 378 246,00	2 801 118,90	82,9
2017	16 757	404	2,4	3 653 115,10	3 037 810,60	83,2
2018	20 720	450	2,2	2 870 476,40	2 189 795,00	76,3

Fatalities and injuries in fires

Category	2014		2015		2016		2017		2018		Index %	
	F	I	F	I	F ¹⁾	I	F ¹⁾	I	F ¹⁾	I	F ²⁾	I
Children under 15 years	1	87	4	98	2/3	103	2/3	95	4/5	103	167	108
Persons from 15 to 60 years	78	748	84	937	46/78	876	38/66	970	39/70	955	106	98
Persons over 60 years	35	141	27	172	36/43	130	17/22	140	20/25	155	114	111
Professional firefighters	0	123	0	153	0	106	1	111	0	129	0	116
Voluntary firefighters	0	80	0	89	0	76	0	76	0	124	x	163
Total	114	1 179	115	1 449	84/124	1 291	57/92	1 392	63/100	1 466	109	105

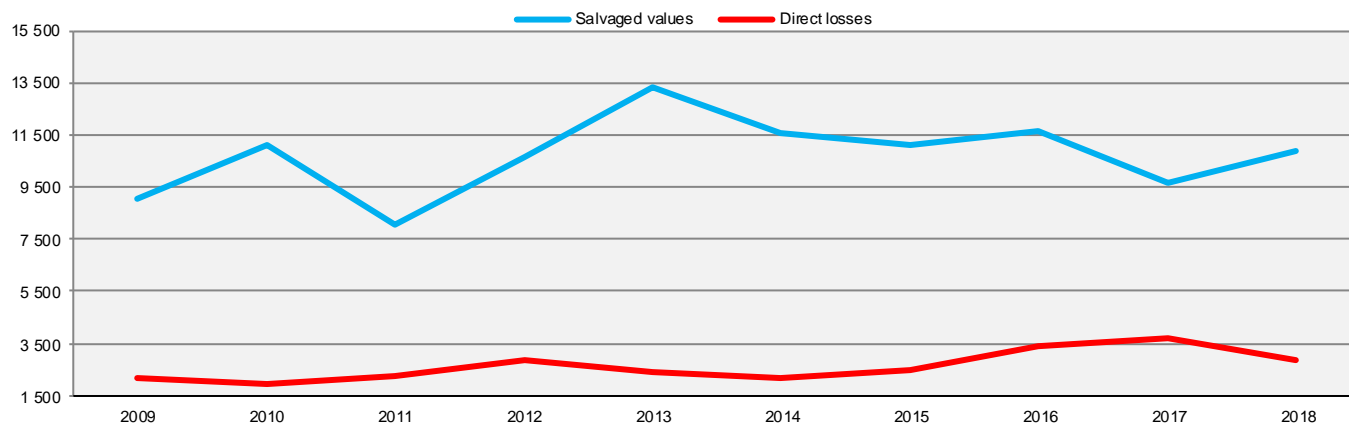
¹⁾ fatalities in direct context / total fatalities

²⁾ from total number of fatalities

Fires and losses by place of origin

Building, object	Number	Index %	Losses in mill.CZK	Index %	Salvaged values in mill. CZK	Fatalities		Injuries
						in direct context	total	
Civil buildings, incl. buildings for transport and lines	725	102	411,83	129	1 280,54	6	13	167
Housing funds	1 565	103	123,58	116	612,19	4	9	402
Family houses and other buildings for housing	1 773	106	307,45	110	1 302,74	25	32	290
Buildings and halls for production and services	361	98	612,26	34	3 866,31	1	1	66
Energetic production buildings	84	106	105,05	49	314,61	0	0	4
Buildings and objects for parking	128	129	119,67	210	229,89	1	1	15
Buildings for storage (excl. agricultural)	60	86	229,77	255	364,43	0	0	18
Buildings for storage of agricultural products	60	150	184,70	230	105,26	0	0	13
Buildings for arable and animal farming	50	152	45,42	571	198,37	0	0	13
Agricultural objects	12	92	9,18	497	61,75	0	0	0
Objects outside the buildings (excl. agricultural)	190	127	81,83	160	340,68	7	7	10
Objects under construction and reconstructions	31	82	4,17	16	16,04	0	0	7
Provisional and purpose objects at buildings	539	115	64,52	168	295,46	3	5	73
Means of transport and working machineries	2 260	111	462,57	93	964,10	8	22	194
Agricultural areas and natural environment	649	108	36,07	149	167,86	0	0	14
Forests	2 033	210	15,01	240	271,07	0	0	35
Open storage areas	3 768	150	13,60	119	163,48	1	1	33
Demolition and dumps	5 017	114	34,60	155	179,56	3	4	55
Others	1 415	142	9,19	110	131,65	4	5	57

Direct losses and salvaged values in fires in mill. CZK



Fires - summary in branches

Economy branch	Number of fires	Share in %	Index %	Losses in thousands CZK	Share in %	Index %	Fatalities		Injuries
							in direct context	total	
Agriculture	3 089	14,91	135	276 945,70	9,65	121	0	0	71
Forestry	2 221	10,72	206	36 938,50	1,29	116	0	0	37
Mining of mineral	33	0,16	97	3 482,20	0,12	27	0	0	0
Manufacturing industry	831	4,01	108	765 556,90	26,67	41	7	7	78
Electricity and gas production and distribution	237	1,14	112	93 096,00	3,24	42	0	0	7
Building industry	131	0,63	121	14 611,20	0,51	47	0	0	2
Commerce, goods repair	183	0,88	121	124 157,80	4,33	292	0	0	20
Hospitality industry and accommodation	449	2,17	119	231 942,60	8,08	145	1	8	93
Transport	2 157	10,41	117	423 616,60	14,76	149	8	18	162
Post offices and telecommunications	20	0,10	133	47 258,00	1,65	10 716	0	0	3
Financial and insurance industry	6	0,03	120	441,00	0,02	83	0	0	0
Research, company services, real estates	408	1,97	136	64 270,60	2,24	52	0	0	66
Public administration, security	80	0,39	68	759,80	0,03	37	0	0	0
Education	35	0,17	64	1 760,50	0,06	9	0	0	4
Health care, social activity	61	0,29	92	6 994,30	0,24	192	1	1	17
Others public and personal services	4 729	22,82	122	221 527,60	7,72	147	3	3	86
Private households	5 340	25,77	109	546 620,00	19,04	118	42	61	799
Others and unclassified	710	3,43	126	10 497,10	0,37	130	1	2	21
Total	20 720	100,00	124	2 870 476,40	100,00	79	63	100	1 466

Fires causes and activities by the origin

Cause	Number of fires	Share in %	Index %	Direct losses in thousands CZK	Share in %	Fatalities		Injuries
						in direct context	total	
deliberate ignition	1 155	5,58	103	195 208,30	6,80	2	4	64
suicidal intention	17	0,08	68	609,00	0,02	4	5	7
children up to 15 years	169	0,82	106	16 528,80	0,58	0	0	39
unproven fault	5 848	28,22	146	66 421,50	2,31	2	4	80
smoking	1 705	8,23	135	72 081,30	2,51	8	14	97
setting a fire, burning off	1 728	8,34	136	8 594,30	0,30	1	1	40
incorrect heater operation	147	0,71	121	18 182,40	0,63	3	5	41
flammable substances near the heater	46	0,22	112	6 395,00	0,22	0	0	33
use of flammable liquids and gasses	69	0,33	138	9 010,50	0,31	1	3	58
use of open fire	245	1,18	85	30 293,70	1,06	3	4	62
manipulation with burning ashes	442	2,13	132	86 077,80	3,00	3	3	24
welding, cutting, defreezing	198	0,96	134	137 750,00	4,80	0	0	36
ignition of food by cooking	677	3,27	105	16 679,50	0,58	0	3	112
negligence of safety instructions	473	2,28	113	239 086,30	8,33	3	4	136
negligence, mistake, incorrect handling, unclassified negligence	347	1,67	101	87 688,10	3,05	3	3	33
negligence - total	6 077	29,32	124	711 838,90	24,79	25	40	672
improper constructure of the chimney	85	0,41	108	19 328,00	0,67	0	0	7
walled beam in the chimney	34	0,16	92	12 148,00	0,42	0	0	15
joints in the chimney	18	0,09	72	12 579,00	0,44	1	1	3
sparks from the chimney, soot ignition	937	4,52	106	13 358,50	0,47	1	1	13
chimneys - total	1 074	5,18	104	57 413,50	2,00	2	2	38
technical failure in heater	48	0,23	145	6 023,80	0,21	0	0	8
bad condition of heater or flue	24	0,12	120	4 371,00	0,15	1	1	2
improper placement or instalation of heater	60	0,29	103	20 254,50	0,71	1	1	12
other heater failure	10	0,05	59	4 501,00	0,16	0	0	2
heaters - total	142	0,69	111	35 150,30	1,23	2	2	24
technical failure	2 620	12,64	111	959 579,40	33,43	3	3	200
incorrect instalation	11	0,05	110	1 205,00	0,04	0	0	2
improper service	7	0,03	100	1 935,00	0,07	0	0	0
burning materials, products	49	0,24	129	4 653,10	0,16	0	0	6
foreign object in the machine	196	0,95	148	74 224,90	2,59	0	0	6
electricity static charge	12	0,06	109	5 325,00	0,19	1	1	4
sparks from the exhaust, brakes	176	0,85	223	5 370,80	0,19	0	0	2
rubbing, overheating	162	0,78	113	25 891,90	0,90	0	0	12
other changes in operational parameters	844	4,07	112	230 580,50	8,03	1	2	59
technical failures - total	4 077	19,67	115	1 308 765,60	45,60	5	6	291
self ignition of agricultural crops	143	0,69	157	17 864,60	0,62	0	0	1
self ignition of coal	26	0,13	144	1 224,00	0,04	0	0	0
self ignition of oils	9	0,04	129	1 551,00	0,05	0	0	3
self ignition of chemical substances	15	0,07	71	65,00	0,00	0	0	4
self ignition of chemical products	26	0,13	163	2 764,00	0,10	0	0	0
other self ignition (e.g. waste)	118	0,57	140	137 374,00	4,79	0	0	5
self ignitions - total	337	1,63	142	160 842,60	5,60	0	0	13
gas explosion	2	0,01	67	1 300,00	0,05	0	0	2
flammable liquids explosion	1	0,00	17	122,00	0,00	0	0	0
dust explosion	1	0,00	x	0,00	0,00	0	0	0
explosive detonation	0	0,00	0	0,00	0,00	0	0	0
cylinders, boilers explosion	0	0,00	0	0,00	0,00	0	0	0
explosions - total	4	0,01	36	1 422,00	0,05	0	0	2
handling of flammable substances	13	0,04	217	5 850,00	0,20	0	0	2
lightning - objects with conductor	4	0,02	57	3 020,00	0,11	0	0	0
lightning - objects without conductor	21	0,10	88	3 052,00	0,11	0	0	2
lightning - others	77	0,37	92	3 716,60	0,13	0	0	0
natural disaster	24	0,12	109	1 425,00	0,05	0	0	2
traffic accident	140	0,68	121	15 853,50	0,55	4	15	123
military exercise, fireworks	48	0,23	84	517,00	0,02	0	0	2
special causes - total	314	1,52	101	27 584,10	0,97	4	15	129
unclear	1 196	5,77	117	84 584,50	2,95	4	5	53
under investigation	177	0,85	102	197 837,30	6,89	13	17	50
unexamined *	120	0,58	169	420,00	0,01	0	0	2
causes - total	20 720	100,00	124	2 870 476,40	100,00	63	100	1 466

*) new category

Prevention

Survey of fire prevention of FRS CR

		2014	2015	2016	2017	2018	
Fire risk assessment	submitted	61	121	74	75	67	
	approved	45	78	50	56	54	
	all approved	643	689	713	656	702	
Acts preceding inspection			2 148	2 449	2 370	1 739	
Inspection	legal entities and trading natural person	complex inspections	1 113	885	874	829	775
		thematic inspections	8 248	9 688	9 417	9 051	8 749
		control inspections	2 202	147	17	133	12
	natural person	complex inspections	1	0	0	0	0
		thematic inspections	10	10	6	3	22
		control inspections	0	1	0	0	0
	municipalities	inspections	439	371	574	578	454
in inspection group of other authority	inspections	45	24	18	23	45	
Administrative decision	on object exclusion of usage	number	17	18	22	11	23
	on business ban	number	49	24	28	19	16
	on shutdown	number	0	0	0	0	0
	on proper categorization	number	0	0	0	0	0
	on range and administration of documentation on fire protection	number	0	0	0	1	0
	on evaluation of fire risk	number	62	75	57	66	50
	other decisions	number	27	7	19	569	1 484
Structural prevention	issued statements	number	79 167	78 449	87 489	90 111	63 820
	territorial and structural management	number of invitation	21 321	19 964	20 830	19 540	16 501
		number of attendance	1 670	1 653	1 504	1 509	1 036
	instalattion building into the use	number of invitation	35 183	36 200	36 279	37 716	30 381
		number of attendance	31 024	31 844	32 112	33 786	26 405
cooperation out of range of fire supervision	number of disposed requests	669	804	969	1 369	2 187	
Other activities	disposed requests	number	9 203	11 299	18 954	13 439	13 490
Investigation of fire causes	fire documentation	number	8 330	9 499	8 227	7 939	8 869
	fire-technical expertise	number	457	521	537	476	469

Note: Differences between the sum of approved fire-risk evaluations and the item "All approved" is caused by the sequential revision fire-risk evaluations approved before the year 2001 and cancelling of fire-risk evaluations due to changes of company activity.

Fires - the way of conclusion

	2014	2015	2016	2017	2018
unclassified, wasn't monitored	10 851	10 057	6 668	6 969	9 245
concluded by FRS region	875	1 193	1 281	1 439	1 935
discussed on the place of fire	782	1 374	1 355	1 203	818
postponed, stopped, another way of FRS region, Police of CR	2 925	5 370	4 845	4 955	5 706
postponed by Police of CR	613	628	572	616	853
concluded by the court	24	16	11	9	15
announced to others administration authorities	9	20	18	18	19
object exclusion of usage, business ban, shutdown	8	9	18	17	33
in investigation of Police of CR	1 301	1 565	1 485	1 531	2 096
Total	17 388	20 232	16 253	16 757	20 720

International cooperation

Humanitarian aid

Humanitarian aid is governed by Act No. 151/2010 Coll. on international development cooperation and humanitarian assistance abroad. Humanitarian assistance abroad is the set of activities financed from the national budget in order to prevent loss of life and injury, to alleviate suffering and to restore basic living conditions after an emergency and to mitigate long-lasting consequences of emergencies and to prevent their occurrence and negative consequences.

Humanitarian aid includes both ad hoc response to natural or man-made disasters, and aid in long-term (complex) humanitarian crises and disaster prevention.

State humanitarian aid to foreign countries is financed from funds allocated in the budget of the Ministry of Foreign Affairs. Humanitarian aid provided abroad can be financed from this budget in particular: material, financial, advisory or combined.

According to Article 9 of Act No. 151/2010 Coll., on international development cooperation and humanitarian assistance abroad, the Ministry of Interior provides humanitarian aid to EU member states and other states of the European Economic Area and decides on its scope and form.

In 2018, the sum of 180 million CZK was originally allocated to humanitarian assistance; during the year the budget was increased by another 27 million CZK for assistance to Syria and for the realization of the MEDEVAC programme at the Czech Embassy abroad. During 2018, 44 humanitarian activities in 23 countries were supported in the total amount of 181,3 million CZK; other 7 activities in total 31,45 million CZK was indicated for recovery of Syria.

Almost 88% of the budget was allocated to the needs of displaced persons, (internally and in third countries) as a result of conflicts, including support for host communities; the remaining 12% was allocated for disaster relief, including reconstruction and resilience.

The Czech Republic provided humanitarian assistance to following countries in 2018: Burma/Myanmar, Ethiopia, Central African Republic, Ukraine, Syria, Iraq, Lebanon, Jordan, Yemen, Albania, Bosnia and Herzegovina, Mexico, Afghanistan, Nigeria, Mali, South Sudan, Indonesia, Palestine, Philippines, Pakistan, and Morocco.

During 2018, the expert assistance to Thailand was provided, assistance was offered to Sweden during forest fires, and the material assistance to Greece was agreed to be implemented in the following year.

Detailed information about humanitarian assistance not only in the year 2018 can be found on www.usar.cz.

The allocated budget for humanitarian assistance to foreign countries is 218 million CZK for the year 2019.

Thailand

The Czech Republic has actively participated in the rescue mission in the Tham Luang Cave in northern Thailand, where twelve boys and their football coach were trapped by torrential rains. The Minister of Interior in agreement with the Directorate-General of the FRS CR decided to deploy two members of the FRS CR who flew to Thailand on Friday 6 July. Reconnaissance expert group was composed of col. David Kareš and Petr Vodička. They were assessing the situation in Thailand from 6 to 11 July. The Czech Republic suggested assistance in the form of high capacity pumps in the initial stage. The possibility of their deployment was refused by Czech experts because of the difficult terrain profile and successful water pumping. Subsequently, smaller type of high-performance sludge pumps and the necessary electrical and hoses lines were offered to the Thai side. Thailand eventually did not accept the Czech offer to help for successful evacuation of all persons from the cave.

Sweden

In the summer 2018, Sweden was affected by extensive forest fires. In July, Sweden requested international assistance through the European Emergency Rescue Coordination Centre. The Czech Republic itself faced fires in the natural environment and was limited in the number of usable aircraft. Even though, the assistance was offered to Sweden in the form of a helicopter with bucket with the crew. The Swedish party did not accept the offer of the Czech Republic.

Greece

Based on the request of the Ministry of Foreign Affairs in September 2018, the MoI-DG FRS CR prepared material for humanitarian assistance to Greece, which was in the summer months also affected by fires. Assistance will be provided in particular to Megara Fire Brigade. The MoI-DG FRS ensures the purchase of material (equipment for fire protection, such as special firefighting vehicles, firefighting boots, portable pumps, etc.) and its transport to Megara in southern Greece in the first half of 2019.

Year	2014	2015	2016	2017	2018
Number of cases	35	43	35	48	51
Number of countries	26	26	25	29	24
Sum in millions of CZK	83,5	89,9	101,2	158,9	212,8

International development cooperation

Based on the previous cooperation between Civil Protection and Emergency Situation Service of Moldova and FRS CR, development cooperation was agreed with Czech Development Agency, and the project “The Improvement of Operational Competence and Proficiency of Moldovan Firefighters II” was realized. The project implementation was focused on flood protection in 2018. Moldovan firefighters were given flood barriers. These barriers were purchased by the Czech Development Agency on the basis of the technical specification pre-

pared by the experts of the FRS CR. In July, 10 Moldovan firefighters arrived in the Czech Republic to be acquainted with the barrier system. A one-week training focused on both flood protection and barrier construction took place in Zbiroh. In autumn, Czech firefighters went to Moldova, where a similar training was held in local conditions and for a larger group of Moldovan firefighters. The project was completed at the end of 2018 and it was funded by the Czech Development Agency. The total project budget was 18,120,400 CZK.

Economic indicators

Fire Rescue Service of the Czech Republic fulfils the tasks in the scope and under conditions of Act on Fire Rescue Service of the Czech Republic, Act on Fire Protection, Act on Integrated Rescue System and Act on Crisis Management. FRS CR also fulfils duties of fire units through its 243 stations. Fire units fulfil the tasks in the area of fire protection, Integrated Rescue System and civil protection.

The efficiency is revealed by the relationship between state budget expenditures to FRS CR and VFU activities, losses and salvaged values in fires that are presented in the table below.

Compared with other countries, losses are among the lowest in relation to GDP in the Czech Republic. This effect attributes to the fact that in more than 70% cases the dislocation of closest unit is less than 5 km from the spot of emergency.

Salvaged values during interventions of fire units in other types of emergencies are not included in the table, as there is no reliable methodology to assess the effects of these other interventions.

Economic indicators		2014	2015	2016	2017	2018
GDP in current prices ¹⁾	bill. CZK	4 313,8	4 595,8	4 768,0	5 045,2	5 193,6
Real expenditures of FRS CR ²⁾	bill. CZK	7,648	8,049	8,651	9,365	11,455
Non-investment subsidies from state budget for ensuring municipal VFU activity	bill. CZK	0,080	0,061	0,061	0,100	0,119
Investment subsidies from state budget for ensuring municipal VFU activity ³⁾	bill. CZK	0,010	0,063	0,238	0,352	0,381
Share of real expenditures of FRS CR due to GDP	%	0,18	0,18	0,18	0,19	0,22
Direct losses caused by the fire	bill. CZK	2,198	2,496	3,378	3,653	2,870
Direct losses compared to GDP	%	0,05	0,05	0,07	0,07	0,06
Salvaged values in fires	bill. CZK	11,534	11,093	11,654	9,674	10,866
Salvage values due to GDP	%	0,27	0,24	0,24	0,19	0,21

¹⁾ GDP for 2018 is defined by the Czech Statistical Office

²⁾ Real expenditures including gain of all budget sources and also extra-budgetary sources of FRS CR activity

³⁾ Including financial means from Fund for preventing damages through the budget of FRS CR

Types of incidents with interventions of fire units

Fire – intervention to any undesirable combustion, which causes fatality or injury of persons or animals, or damage of property or environment. Undesirable combustion in which people, animals, property or environment are in imminent danger is also considered as a fire.

Traffic accident – intervention related to collision of transport means, in which the person was killed or injured or there is damage on property. Traffic accident followed by fire is always considered as a fire. A traffic accident is also considered as a case in which the fire units eliminated only the minor consequences of an accident (cleaning of roads or removing leakages of substances - vehicle operational filling, etc.), if this was the result of a traffic accident of the above mentioned definition.

HazMat leakage – intervention in emergencies associated with undesirable leakage of HazMat, including oil products (during production, transport or handling), and other substances. Intervention is aimed to limit or reduce the risk of uncontrolled release of flammable, explosive, corrosive, toxic, harmful, radioactive and other hazardous substances, oil products or other substances into the environment (natural gas, acids and their salts, alkalis, ammonia, etc.), including serious accidents, according to Article 2 of the Act No. 224/2015 Coll., on Prevention of serious accidents.

Leakage of oil products – intervention mainly to prevent leakage and to limit its range of oil (gasoline, diesel or oil). Leakage of these substances from vehicle operational fillings due to traffic accidents are classified as “traffic accident”.

Technical accident – intervention to eliminate hazards or hazardous conditions

Technical assistance – intervention to eliminate hazards or hazardous conditions of smaller scale besides technological assistance and traffic accident, for example:

- rescue of persons from the lift,
- emergency opening of the apartment,
- removing obstacles from roads and other areas,
- opening locked areas,
- disposal of fallen trees, electrical wires, etc.,
- ventilation,
- rescue of people and animals,
- pumping, water closing and water supply,
- assistance in explosives finding,
- provisional or other repairs,
- extrication of objects, persons,
- measurement of concentrations or radiation.

Technological assistance – intervention to eliminate hazards or hazardous conditions in the technological operations of companies.

Other assistance – intervention, which can't be defined as a technical accident, technical or technological assistance; such as transport of patient, searching for missing persons, monitoring water streams, road accessibility control etc. and other on-demand services (both directly and indirectly provided assistance).

Radiation accident – intervention in incidents related to the improper release of radioactive substances or ionizing radiation.

Other emergency – intervention in other emergencies such as epidemics or infection, ensuring suspicious shipments and also interventions for events that can't be classified under above mentioned types.

False alarm – intervention after reporting a fire or other emergency, which wasn't confirmed.

Natural disaster, weather influence – intervention in an emergency caused by harmfully acting forces and phenomena caused generally or locally by natural influences that threaten lives, health, property or the environment - floods, flooding, rain, snow, ice, windstorms, landslides, earthquakes, etc. in which fire units carried out the rescue and liquidation work. Natural disasters are registered always with index associated with the type of disaster.

Statistical Yearbook 2018

Publisher: Ministry of the Interior, Fire Rescue Service of the Czech Republic
Authors: Klára Žůrková and composite authors
MoD data: Róbert Murín
Photos: Archive of The Fire Rescue Service of the Czech Republic
Translation: Alena Horáková
Copyreaders: Roman Bílý

Translation without English language editing.